

EFFICIENT, COMPLIANT ARTIFACT RECOVERY

FOR BC HERITAGE & ARCHAEOLOGICAL SITES

Meet Heritage Requirements
Without Slowing Down Your Project



THE CHALLENGE

On regulated sites, soil must be screened carefully for artifacts before work can continue.

- Slow, manual screening
- Labour-heavy processes
- Tight work areas
- Project delays and rising costs



THE SOLUTION

Mobile screening equipment designed for real job sites.

- Screen efficiently, without sacrificing control
- Reduce manual labour and fatigue
- Operate in tight, remote, or active sites
- Keep your project moving and compliant

CHOOSE THE RIGHT TOOL FOR YOUR SITE

BIG SITE?

WARRIOR 1800



- ✓ Move big volumes, without bottlenecks
- ✓ Handles mixed material without constant babysitting
- ✓ Keeps your project on schedule

NEED MOBILITY?

COLT 600



- ✓ Track-mounted and easy to move
- ✓ Quick setup and repositioning
- ✓ Steady output without a large crew

WORKING TIGHT?

MINI SCREENS



- ✓ Perfect for detailed artifact recovery
- ✓ Fits tight, confined-space job sites
- ✓ Portable, simple, generator ready

You get:
Controlled, efficient,
processing, that keeps
your timeline intact,

Why It Works



SET UP IN
MINUTES
NOT HOURS



WORKS IN
CONFINED
OR REMOTE
LOCATIONS



REDUCES MANUAL
SCREENING
LABOUR



CONSISTANT,
REPEATABLE
RESULTS

FOREMAN
EQUIPMENT LTD.



1-888-852-9021
info@foremanequipment.com



Learn More:
[www.foremanequipment.com/
construction-artifact-screening](http://www.foremanequipment.com/construction-artifact-screening)

PROVEN SCREENING SOLUTIONS FOR ARCHAEOLOGICAL SITES

Supporting BC Heritage compliance with real-world experience on active job sites.



HOW SCREENING FITS INTO ARCHAEOLOGICAL WORK

On regulated sites in British Columbia, soil must be carefully screened before excavation can continue. This process plays a critical role in preserving artifacts while allowing construction to move forward.

On many projects, this work is done manually, which can be slow, labour-intensive, and difficult to scale when material volumes increase.



WHAT THIS LOOKS LIKE ON SITE

- ✓ Material is screened directly at the excavation area
- ✓ Crews maintain visibility and control over screened material
- ✓ Larger volumes are processed without creating bottlenecks
- ✓ Equipment is repositioned as the dig progresses

We've worked alongside teams to introduce mobile screening equipment directly on site, helping to improve efficiency while maintaining the level of control required for archaeological recovery.

The goal isn't to replace the process, it's to make it safer, easier and more manageable on site.



The result is a more efficient workflow that supports both archaeological requirements and construction timelines.



SCREENING DIRECTLY AT THE DIG



INTEGRATED INTO THE WORKFLOW



EFFICIENT MATERIAL PROCESSING



SUPPORTS ARTIFACT DISCOVERY

PLANNING A SITE? LET'S TALK.

If you're working on a project that requires archaeological screening, we can help you determine the right approach based on your site



1-888-852-9021
info@foremanequipment.com



Learn More:
www.foremanequipment.com

ARCHAEOLOGY AT WORK

FOREMAN EQUIPMENT

ARCHAEOLOGICAL DISCOVERIES ARE HAPPENING ON ACTIVE JOB SITES

Careful excavation and screening practices are essential to uncover and protect our shared history.

On one recent project, a significant artifact discovery reminds us why on-site screening and vigilance matter on every dig.

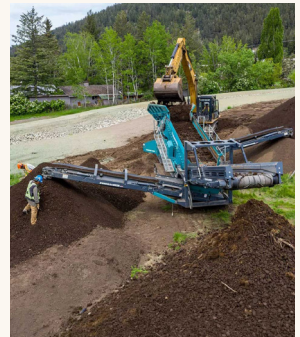


CBC NEWS

FEATURED BY CBC NEWS

A discovery near Williams Lake uncovered what is believed to be one of the oldest artifacts ever found in Canada, dating back thousands of years.

The find highlights the importance of careful excavation and screening practices on sites across British Columbia.



Scan to read full article



READ THE FULL STORY

www.cbc.ca/news/canada/british-columbia/oldest-artifact-williams-lake-1.5608795



THIS IS EXACTLY THE TYPE OF WORK WHERE CONTROLLED, ON-SITE SCREENING PLAYS A CRITICAL ROLE.

By processing material directly at the excavation site, crews can maintain visibility and control while improving efficiency, supporting both artifact recovery and construction timelines.

Field Excavation Crew At Work



Mobile Screening Working Alongside Field Crews



Field Crew Searching For Artifacts



Where Production Meets Control On Active Job Sites



FOREMAN EQUIPMENT LTD.



1-888-852-9021
info@foremanequipment.com



Learn More:
www.foremanequipment.com

44109 Yale Road West, Chilliwack, BC V2R 3Z9